

Leak Proof
TECHNOLOGY



**RAIN
BUSTER**

Since 1983

435



Sill Pan End Dam

RainBuster 435

RainBuster 435 Sill Pan End Dam is a one-piece molded flashing corner ideal for use in new construction sill pan creation. It uniformly flashes vulnerable corner areas beneath windows and doors, permanently preventing water intrusion. When paired with RainBuster flashing membranes and RainBuster sealant, it provides a high performance, cost effective sill pan solution that meets and exceeds industry standards.

RainBuster 435's high quality low density polyethylene formulation offers outstanding flexibility, strength, and consistency. Its compact design and low profile make it easy to install and non-intrusive to window and door installations.

RainBuster 435 is part of the RainBuster Leak Free Window & Door Installation System. The system offers a catalog of field proven installation procedures and comes with an enhanced 30 Year Parts & Labor Warranty. The RainBuster Leak Free System is supported in the field by a team of Top Industrial window installation experts that are available for consultation and training. RainBuster 435's formulation provides universal compatibility with the flashings and sealant included in the RainBuster Leak Free System.

Features:

- High performance Sill Pan End Dam corner flashing
- Designed specifically for sill pan creation in window and door installation
- Prevents leaks in critical corner locations
- Easy to install
- Outstanding strength and flexibility
- A part of the RainBuster Leak Free Window & Door Installation System
- For use with RainBuster flashing membranes and RainBuster sealant
- RainBuster installation procedures for sill pan creation available through Top Industrial
- Angled outside wall leg allows for paired install with RainBuster 430 Recess Quick Corners, without need for field modification.



**Part of the
Leak Free
Window
Installation
System**

435



RAIN BUSTER®

Since 1983



SILL PAN END DAM INSTALLATION

RainBuster 435 should be installed with RainBuster flashing membrane and RainBuster 450 sealant as per detailed sill pan creation steps found in RainBuster Leak Free Installation System procedures. Contact Top Industrial for procedures and assistance.

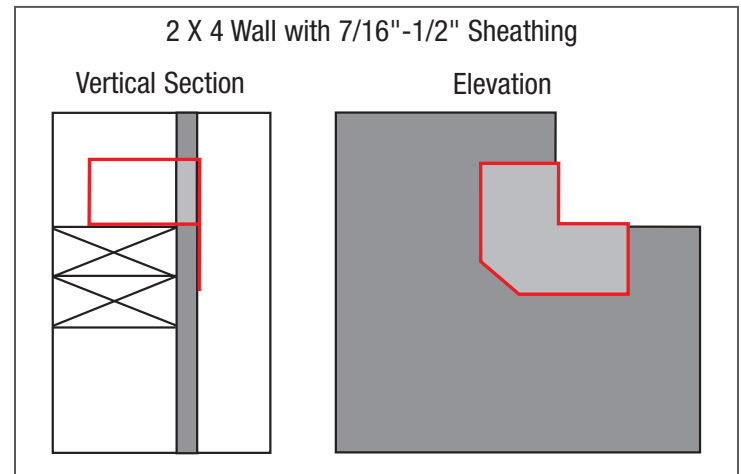
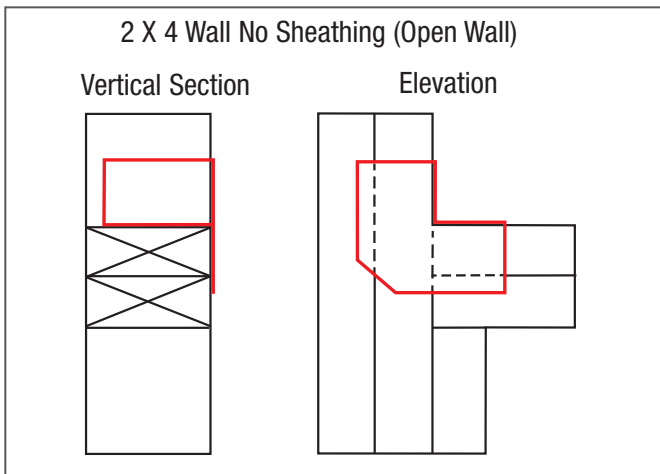
Note: Window should be installed within 30 days of sill pan creation.

WARRANTY

30 YEAR WINDOW & DOOR INSTALLATION SYSTEM WARRANTY: When RainBuster 435 is used as part of the RainBuster Leak Free Installation System, and per RainBuster recommended installation procedures, a 30 Year Parts & Labor Warranty is provided. Contact Top Industrial for further information.

LIMITED LIFETIME PRODUCT WARRANTY: Top Industrial, Inc. warrants this product to perform as described on its package and datasheet for a period of 100 years from the date of purchase. Upon proof of purchase, Top Industrial's sole responsibility, expressed or implied, shall be to replace product proven defective and is limited to the stated selling price. This warranty is not transferable from the original purchaser. In no event shall Top Industrial be liable for consequential or incidental damages.

ELEVATION AND VERTICAL SECTION DETAILS



TECHNICAL SPECIFICATIONS

Thickness	52 mils
Dimensions	Width = 2", Height = 2", Depth = 3", Outside Wall Leg Width = 2"
Tensile Strength (ASTM D638)	1,700 psi
Elongation at Break (ASTM D638)	150%
Hardness, Type D (Shore A)	51
Service Temperature	-20°F to 230°F
UV Resistance	30 Days. Not intended for permanent exposure.